

New Features and Enhancements in StressCheck v11.0 Update 1

ESRD, Inc.
June 2021



New Features & Enhancements in SC 11 Update 1



STRESSCHECK

- ❑ General GUI Cleanup, Tune-ups, Optimizations & Fixes
- ❑ Optimized Solve and Results Panes for Improved User Flow
- ❑ Dockable Panes Extended to Display Objects, View Controls, & More
- ❑ New Feature for Exporting & Importing Solution and/or Extracting Settings
- ❑ Significantly Improved Accuracy of Mesh Region Assignments
- ❑ Offline Documentation Now Available



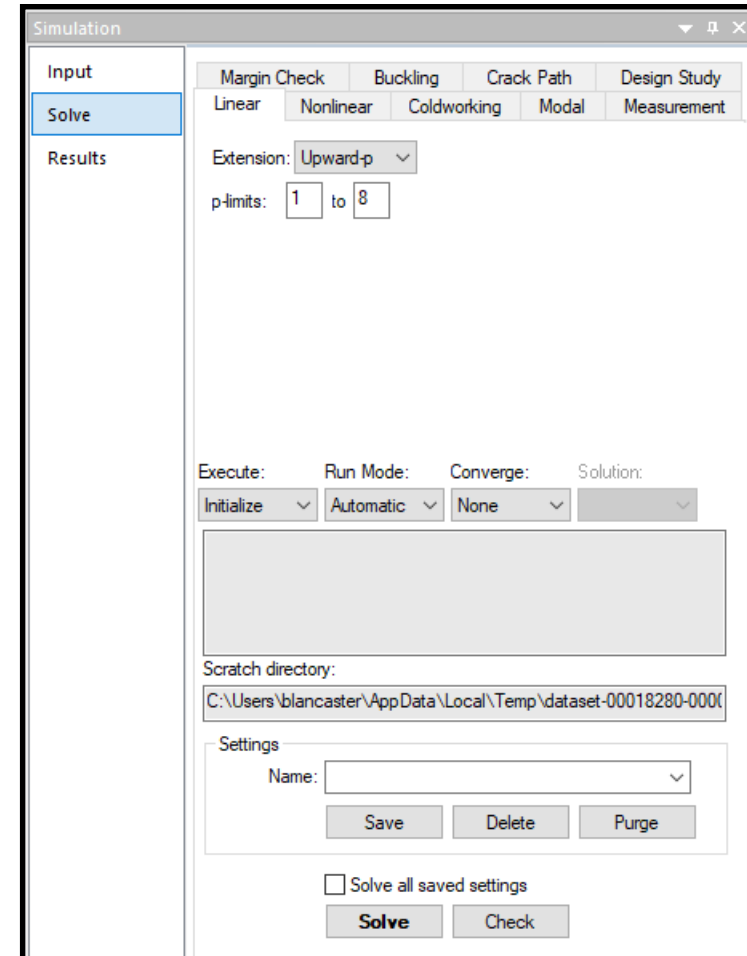
OPTIMIZED SOLVE AND RESULTS PANES TM

Optimized Solve Pane



STRESSCHECK®

- In addition to all the improvements introduced with the release of StressCheck v11, in Update 1 ESRD has optimized the Solve and Results panes for maximum efficiency and improved user flow.
 - Each solver tab now contains all the appropriate solver inputs, user-defined solution settings and commands to seamlessly perform the desired analysis.
 - Selecting a saved solution setting will take the user to the corresponding Solver tab.

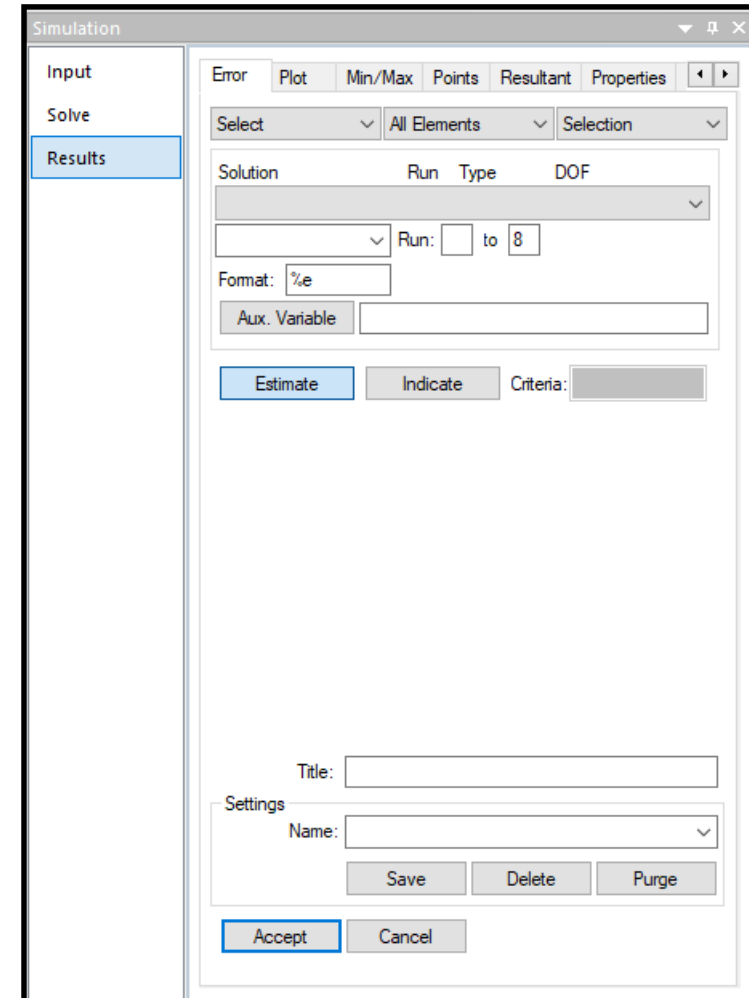


Optimized Results Pane



STRESSCHECK®

- Similarly, in the Results tab, saved extraction settings, such as user-defined fringe plots, maximum stress checks, or strain gradient extractions, are now easily accessed and available across all Results dialog tabs.
 - Simply select a results extraction setting from the Settings pane, and the Results dialog will automatically shift to the appropriate Results tab and fill in the desired extraction settings.





**DOCKABLE PANE IMPLEMENTATION
COMPLETED**

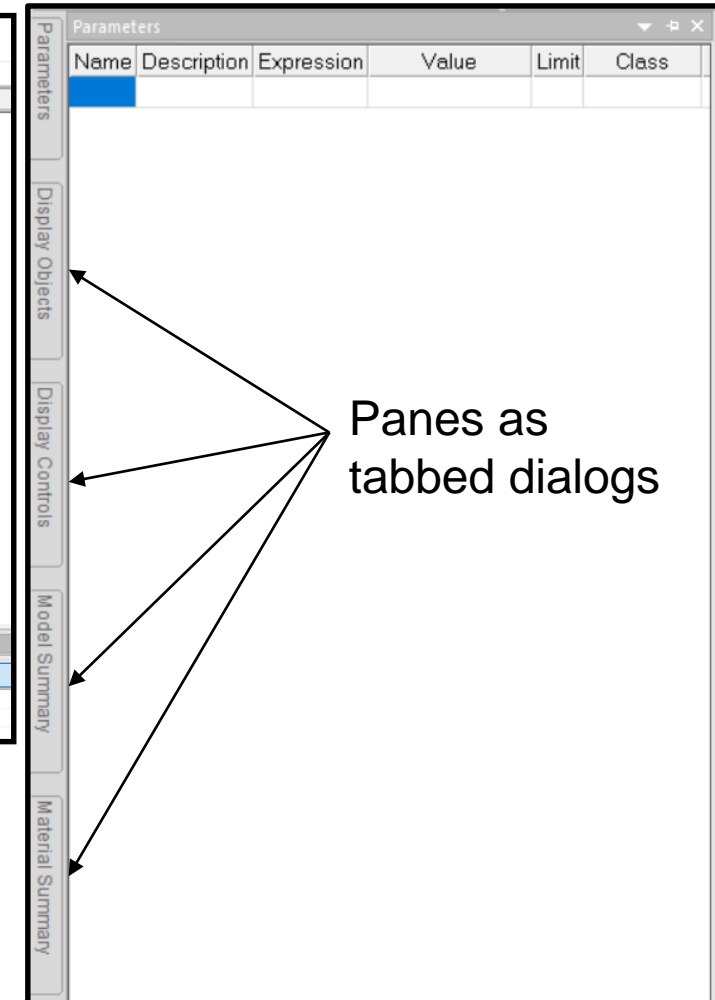
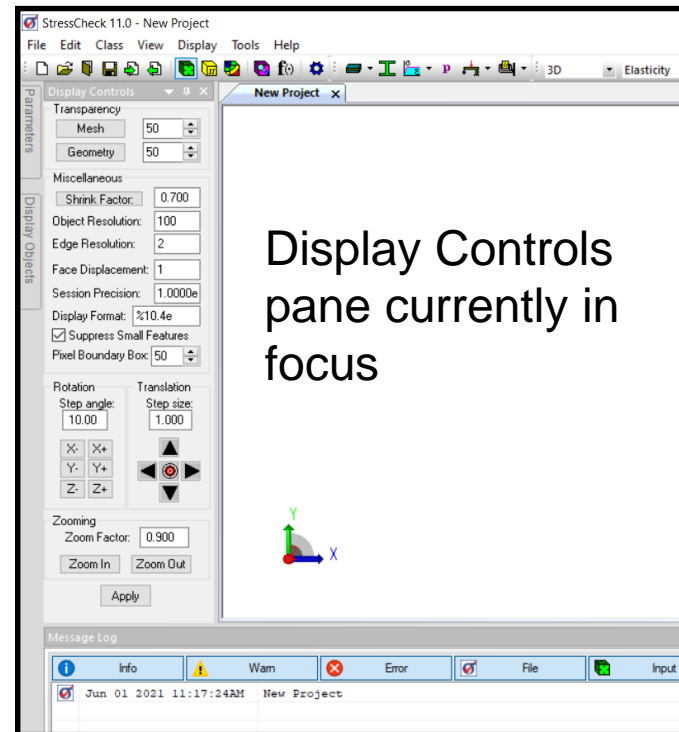
TM

Dockable Pane Implementation Completed



STRESSCHECK™

- In StressCheck v11 Update 1, we have completed the implementation of a friendlier and modern GUI paradigm, upgrading the **Display Objects**, **Display Controls**, **Model Summary**, and **Material Summary** panes.
 - These panes have also been generally optimized for an improved user experience.





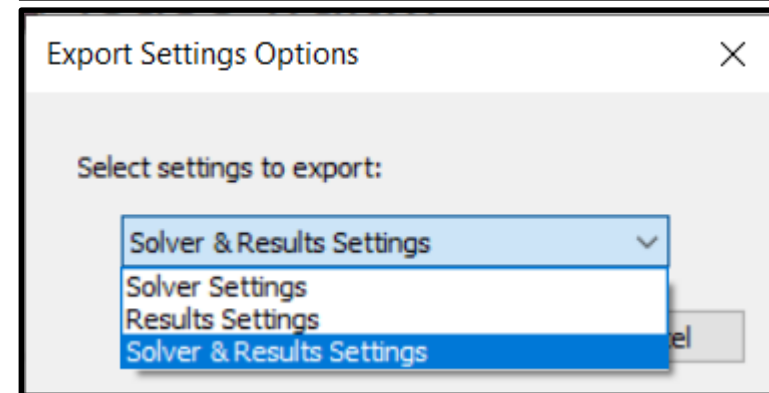
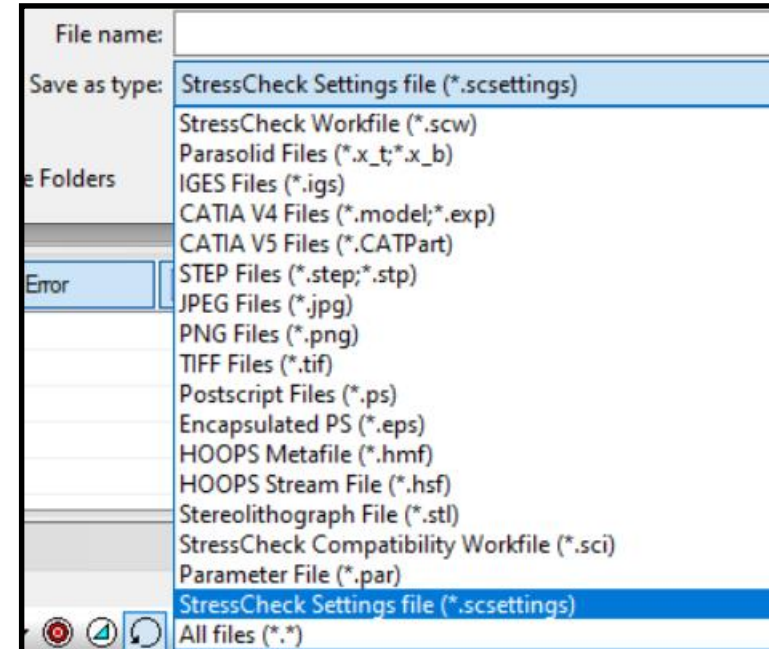
**NEW FEATURE TO IMPORT/EXPORT SOLUTION &
EXTRACTION SETTINGS**

New Feature to Import/Export Settings



STRESSCHECK

- ❑ A new feature is available to export all solution and/or extraction settings from the current StressCheck project.
 - Use File > Export, change the filter to **.scsettings** and specify a Settings file name.
 - During the Settings file export, an options dialog will appear to declare which settings (solver, results or both) are exported.
- ❑ Settings files may be imported to the current StressCheck project via File > Import.





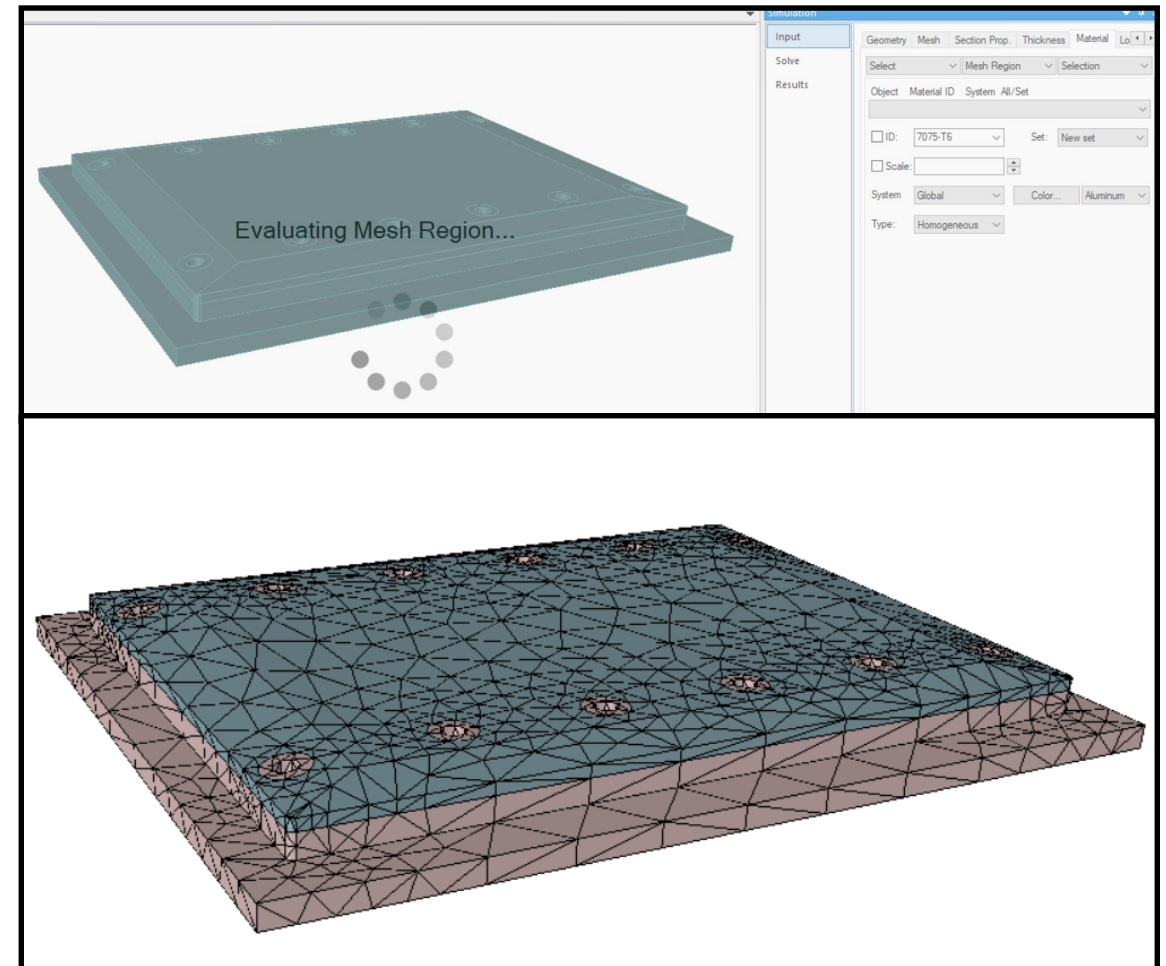
MESH REGION ACCURACY BOOSTED TM

Mesh Region Accuracy Boosted



STRESSCHECK®

- With the v11 Update 1, ESRD has significantly improved the outcome and accuracy of mesh region assignments.
 - In addition, a new lock screen was implemented to provide the user feedback on the mesh region assignment progress.





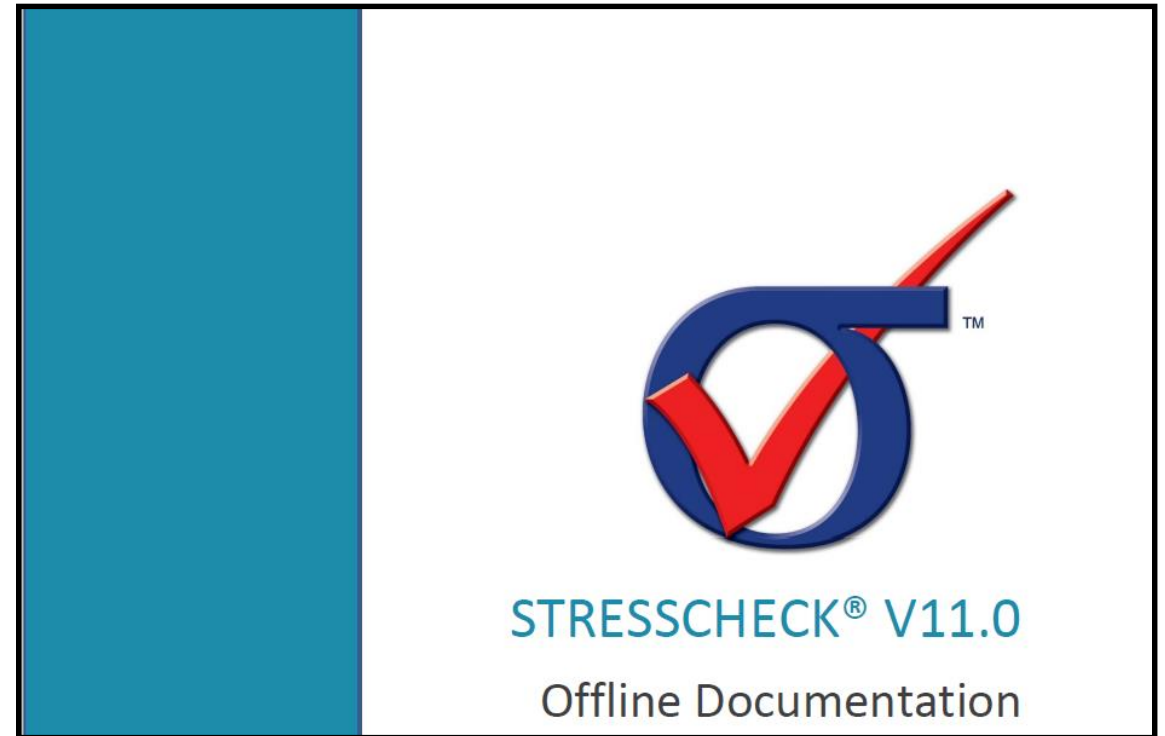
OFFLINE DOCUMENTATION NOW AVAILABLE TM

Offline Documentation Now Available



STRESSCHECK®

- ❑ With the v11 Update 1, offline documentation (in PDF format) is now available for download from our website.
 - Visit: <https://www.esrd.com/product/stresscheck-professional-offline-documentation/>
 - For the latest documentation, visit the [StressCheck Online Documentation](#).





QUESTIONS OR COMMENTS?

TM

Contact support@esrd.com